



CAREER ASSESSMENT

Delaware Area Career Center, South Campus
4565 Columbus Pike, Delaware, OH 43015

Phone: (740) 363-1993 or 548-0708 Ext. 3225, Fax (740) 548-0710

Career Assessment Specialist: Anita Smith, smitha@DelawareAreaCC.org

Career Assessment Assistant: Lisa Mally, mallyl@DelawareAreaCC.org

www.DelawareAreaCC.org

Career Assessment information helps students plan and prepare for future careers. The assessment includes: interest inventories, aptitude and ability testing, work samples, learning styles, implications of personality, academic assessment, and labor market information. This information is shared with students, parents/guardians, teachers and counselors at a post assessment conference.

EXPLORE

What are you doing to explore different career fields?

Discover the possibilities

- Careers in areas of interest
- Employment outlook
- Education options

SET GOALS

Do your career goals reflect your talents, interests and abilities?

Research

- Explore your talents and hobbies
- Discover your strengths
- Identify your aptitudes, learning styles, and job skills
- Develop your job profile

PLAN

What will you be doing after graduation?

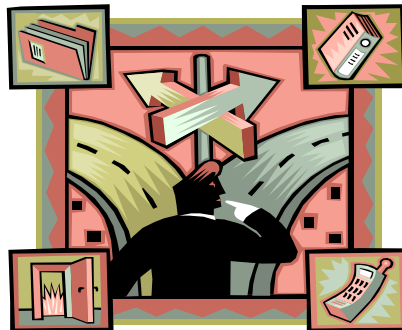
A Career Assessment will

- Increase awareness of career center programs
- Explore transition to work options
- Provide a list of resources for exploring career opportunities

SERVICES

Career Assessment Specialists serve

- Students 14 years of age and older
- Tech prep students
- Students with disabilities
- Students at risk
- College bound students
- Students may be referred by school personnel or by their parent/guardian.



The Delaware Area Career Center affirms that no person shall, on the basis of age, gender, race, color, national origin, religion or creed, pregnancy, handicap or disability be excluded from participation in, be denied the benefits of, or be subjected to discrimination under any educational program or activity conducted under its auspices. Neither the Board nor its employees shall discriminate against any student or individual entitled to participate in the educational program or activities offered by the District, or in the employment or treatment of school district personnel.

